

Worklist: 990

<u>LAB_CASE</u>	<u>ITEM</u>	<u>TASK_ID</u>	<u>DESCRIPTION</u>	
M2015-4001	1	50265	6.1.2 Blood Cannabinoids by LC	
M2015-4062	1	50266	6.1.2 Blood Cannabinoids by LC	
M2015-4086	2	50267	6.1.2 Blood Cannabinoids by LC	
M2015-4101	1	50268	6.1.2 Blood Cannabinoids by LC	
P2015-2476	1	50269	6.1.2 Blood Cannabinoids by LC	
P2015-2479	1	50270	6.1.2 Blood Cannabinoids by LC	
P2015-2533	1	50271	6.1.2 Blood Cannabinoids by LC	
P2015-2539	1	50272	6.1.2 Blood Cannabinoids by LC	
P2015-2544	1	50273	6.1.2 Blood Cannabinoids by LC	
P2015-2557	1	50274	6.1.2 Blood Cannabinoids by LC	
P2015-2564	1	50275	6.1.2 Blood Cannabinoids by LC	
P2015-2569	1	50276	6.1.2 Blood Cannabinoids by LC	

Reviewed 2/8/16



Worklist Report

Worklist Path:	C:\MassHunter\ISP Methods\worklists\2-3-16 Cannabinoid rerun.wkl
Date Modified:	02/04/2016 11:00:13 AM
Date Printed:	02/05/2016 11:44:09 AM

Worklist Run Parameters

Operator Name:	62340
Run Type:	Standard Start
Part of Method to Run:	Acquisition Only
Execution for Acquisition-DA:	Synchronous
Acquisition Method Path:	C:\MassHunter\ISP Methods\Acquisition
DA Method Path:	D:\MassHunter\methods
Data File Path:	C:\MassHunter\Data\020316 combined
Pre-Worklist Script:	---
Post-Worklist Script:	SCP_InstrumentStandby(){MH_Acq_Scripts.exe}
Acquisition Clean Up Script:	SCP_InstrumentStandby(){MH_Acq_Scripts.exe}
Overlapped Injection:	No
Clear sample selection after run:	Yes
Wait Time for Ready(Min):	10
Threshold Disk Value(GB):	10
Comment:	---

Plate Barcode Information

Plate	Barcode
P1	
P2	

Worklist Table

Sample Position	Sample Name	Method	Data File	Sample Type	Level Name	Comment	Info.
P2-A1	Blank	isp blood cannabinoids Poky 2016.m	Blank1-r001.d	Blank		AM 6.1.2 Cannabinoids by LCQQQ	
P2-A1	Blank	isp blood cannabinoids Poky 2016.m	Blank2-r001.d	Blank		AM 6.1.2 Cannabinoids by LCQQQ	
P2-A2	Blood: 1_5 ng/mL	isp blood cannabinoids Poky 2016.m	B_CAL1-r001.d	Calibration	1	AM 6.1.2 Cannabinoids by LCQQQ	c-THC @5ng/mL, all others @1 ng/mL
P2-A3	Blood: 2_10 ng/mL	isp blood cannabinoids Poky 2016.m	B_CAL2_r001.d	Calibration	2	AM 6.1.2 Cannabinoids by LCQQQ	c-THC @10ng/mL, all others @2 ng/mL
P2-A4	Blood: 5_25 ng/mL	isp blood cannabinoids Poky 2016.m	B_CAL3_r001.d	Calibration	3	AM 6.1.2 Cannabinoids by LCQQQ	c-THC @25ng/mL,

Sample Position	Sample Name	Method	Data File	Sample Type	Level Name	Comment	Info.
							all others @5 ng/mL
P2-A5	Blood: 10_50 ngmL	isp blood cannabinoids Poky 2016.m	B_CAL4_r001.d	Calibration	4	AM 6.1.2 Cannabinoids by LCQQQ	c-THC @50ng/mL, all others @10 ng/mL
P2-A6	Blood: 25_125 ngmL	isp blood cannabinoids Poky 2016.m	B_CAL5_r001.d	Calibration	5	AM 6.1.2 Cannabinoids by LCQQQ	c-THC @125ng/mL, all others @25 ng/mL
P2-A7	Blood: 50_250 ngmL	isp blood cannabinoids Poky 2016.m	B_CAL6_r001.d	Calibration	6	AM 6.1.2 Cannabinoids by LCQQQ	c-THC @250ng/mL, all others @50 ng/mL
P2-A8	Blood: 100_500 ngmL	isp blood cannabinoids Poky 2016.m	B_CAL7_r001.d	Calibration	7	AM 6.1.2 Cannabinoids by LCQQQ	c-THC @500ng/mL, all others @100 ng/mL
P2-A1	Blank	isp blood cannabinoids Poky 2016.m	Carryover blank1_r001.d	Blank		AM 6.1.2 Cannabinoids by LCQQQ	
P2-A9	Blood Negative Control	isp blood cannabinoids Poky 2016.m	B-NC-r001.d	Sample		AM 6.1.2 Cannabinoids by LCQQQ	Negative Blood UTAK Lot B0689
P2-B1	Blood 3_15ngmL	isp blood cannabinoids Poky 2016.m	B-3_15-r001.d	Sample		AM 6.1.2 Cannabinoids by LCQQQ	c-THC @15ng/mL, all others @3 ng/mL
P2-A9	Blank M2015-4001-1	isp blood cannabinoids Poky 2016.m	M2015-4001-1_BLK_r001.d	Blank		AM 6.1.2 Cannabinoids by LCQQQ	
P2-B2	M2015-4001-1	isp blood cannabinoids Poky 2016.m	M2015-4001-1-r001.d	Sample		AM 6.1.2 Cannabinoids by LCQQQ	Blood
P2-A9	Blank M2015-4062-1	isp blood cannabinoids Poky 2016.m	M2015-4062-1_BLK_r001.d	Blank		AM 6.1.2 Cannabinoids by LCQQQ	
P2-B3	M2015-4062-1	isp blood cannabinoids Poky 2016.m	M2015-4062-1-r001.d	Sample		AM 6.1.2 Cannabinoids by LCQQQ	Blood
P2-A9	Blank M2015-4086-2	isp blood cannabinoids Poky 2016.m	M2015-4086-2_BLK_r001.d	Blank		AM 6.1.2 Cannabinoids by LCQQQ	
P2-B4	M2015-4086-2	isp blood cannabinoids Poky 2016.m	M2015-4086-2-r001.d	Sample		AM 6.1.2 Cannabinoids by LCQQQ	Blood
P2-A9	Blank M2015-4101-1	isp blood cannabinoids Poky 2016.m	M2015-4101-1_BLK_r001.d	Blank		AM 6.1.2 Cannabinoids by LCQQQ	
P2-B5	M2015-4101-1	isp blood cannabinoids Poky 2016.m	M2015-4101-1-r001.d	Sample		AM 6.1.2 Cannabinoids by LCQQQ	Blood
P2-A9	Blank P2015-2476-1	isp blood cannabinoids Poky 2016.m	P2015-2476-1_BLK_r001.d	Blank		AM 6.1.2 Cannabinoids by LCQQQ	
P2-B6				Sample			Blood

Sample Position	Sample Name	Method	Data File	Sample Type	Level Name	Comment	Info.
	P2015-2476-1	isp blood cannabinoids Poky 2016.m	P2015-2476-1-r001.d			AM 6.1.2 Cannabinoids by LCQQQ	
P2-A9	Blank P2015-2479-1	isp blood cannabinoids Poky 2016.m	P2015-2479-1_BLK_r001.d	Blank		AM 6.1.2 Cannabinoids by LCQQQ	
P2-B7	P2015-2479-1	isp blood cannabinoids Poky 2016.m	P2015-2479-1-r001.d	Sample		AM 6.1.2 Cannabinoids by LCQQQ	Blood
P2-A9	Blank P2015-2533-1	isp blood cannabinoids Poky 2016.m	P2015-2533-1_BLK_r001.d	Blank		AM 6.1.2 Cannabinoids by LCQQQ	
P2-B8	P2015-2533-1	isp blood cannabinoids Poky 2016.m	P2015-2533-1-r001.d	Sample		AM 6.1.2 Cannabinoids by LCQQQ	Blood
P2-A9	Blank P2015-2539-1	isp blood cannabinoids Poky 2016.m	P2015-2539-1_BLK_r001.d	Blank		AM 6.1.2 Cannabinoids by LCQQQ	
P2-B9	P2015-2539-1	isp blood cannabinoids Poky 2016.m	P2015-2539-1-r001.d	Sample		AM 6.1.2 Cannabinoids by LCQQQ	Blood
P2-A9	Blank P2015-2544-1	isp blood cannabinoids Poky 2016.m	P2015-2544-1_BLK_r001.d	Blank		AM 6.1.2 Cannabinoids by LCQQQ	
P2-C1	P2015-2544-1	isp blood cannabinoids Poky 2016.m	P2015-2544-1-r001.d	Sample		AM 6.1.2 Cannabinoids by LCQQQ	Blood
P2-A9	Blank P2015-2557-1	isp blood cannabinoids Poky 2016.m	P2015-2557-1_BLK_r001.d	Blank		AM 6.1.2 Cannabinoids by LCQQQ	
P2-C2	P2015-2557-1	isp blood cannabinoids Poky 2016.m	P2015-2557-1-r001.d	Sample		AM 6.1.2 Cannabinoids by LCQQQ	Blood
P2-A1	Blank	isp blood cannabinoids Poky 2016.m	cann-Carryover blank2_r001.d	Blank		AM 6.1.2 Cannabinoids by LCQQQ	
P2-C3	Blood 25_125ng/mL	isp blood cannabinoids Poky 2016.m	cann-B-25_125-r001.d	Sample		AM 6.1.2 Cannabinoids by LCQQQ	c-THC @125ng/mL, all others @25 ng/mL
P2-A9	Blank P2015-2564-1	isp blood cannabinoids Poky 2016.m	P2015-2564-1_BLK_r001.d	Blank		AM 6.1.2 Cannabinoids by LCQQQ	
P2-C4	P2015-2564-1	isp blood cannabinoids Poky 2016.m	P2015-2564-1-r001.d	Sample		AM 6.1.2 Cannabinoids by LCQQQ	Blood
P2-A9	Blank P2015-2569-1	isp blood cannabinoids Poky 2016.m	P2015-2569-1_BLK_r001.d	Blank		AM 6.1.2 Cannabinoids by LCQQQ	
P2-C5	P2015-2569-1	isp blood cannabinoids Poky 2016.m	P2015-2569-1-r001.d	Sample		AM 6.1.2 Cannabinoids by LCQQQ	Blood
P2-A1	Blank	isp blood cannabinoids Poky 2016.m	Blank3-r001.d	Blank		AM 6.1.2 Cannabinoids by LCQQQ	

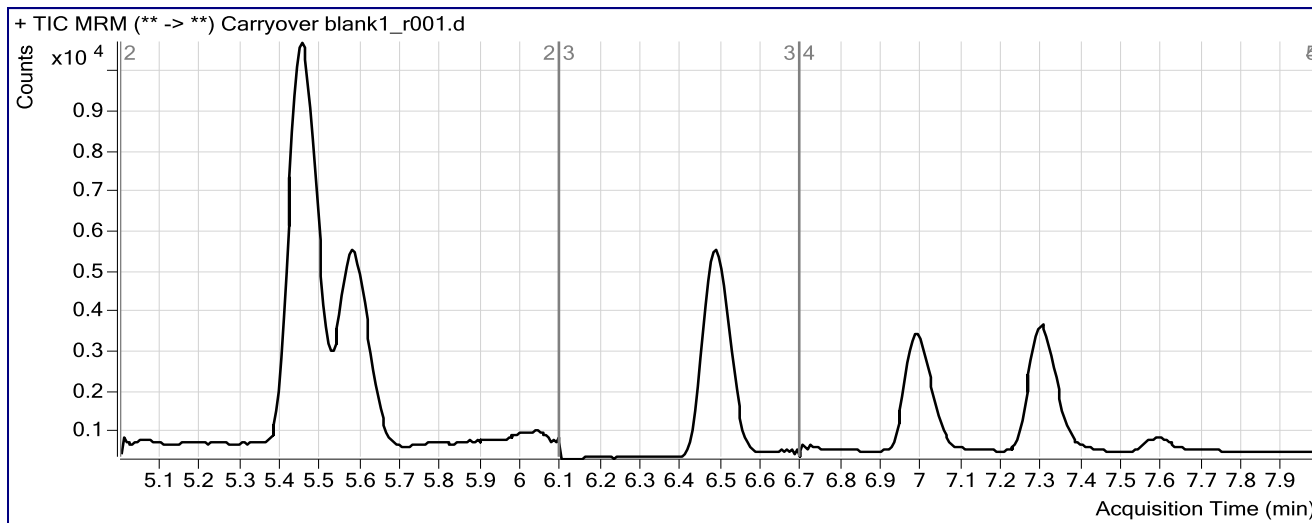
ISP FORENSICS Pocatello Cannabinoid Analysis Report

Batch Data Path	C:\MassHunter\Data\020316 cannabinoid\QuantResults\020516 CANN.batch.bin		
Analysis Time	2/5/2016 12:28 PM	Analyst Name	ISPUser
Report Time	2/5/2016 12:39 PM	Reporter Name	ISPUser
Last Calib Update	2/5/2016 12:28 PM	Batch State	Processed

Analysis Info

Acq Time	2016-02-04 13:17	Data File	Carryover blank1_r001.d
Sample Type	Blank	Sample Name	Blank
Dilution	1	Acq Method	isp blood cannabinoids Poky 2016.m
Position	P2-A1	Sample Info	
Inj Vol	-1	Comment	AM 6.1.2 Cannabinoids by LCQQQ

Sample Chromatogram



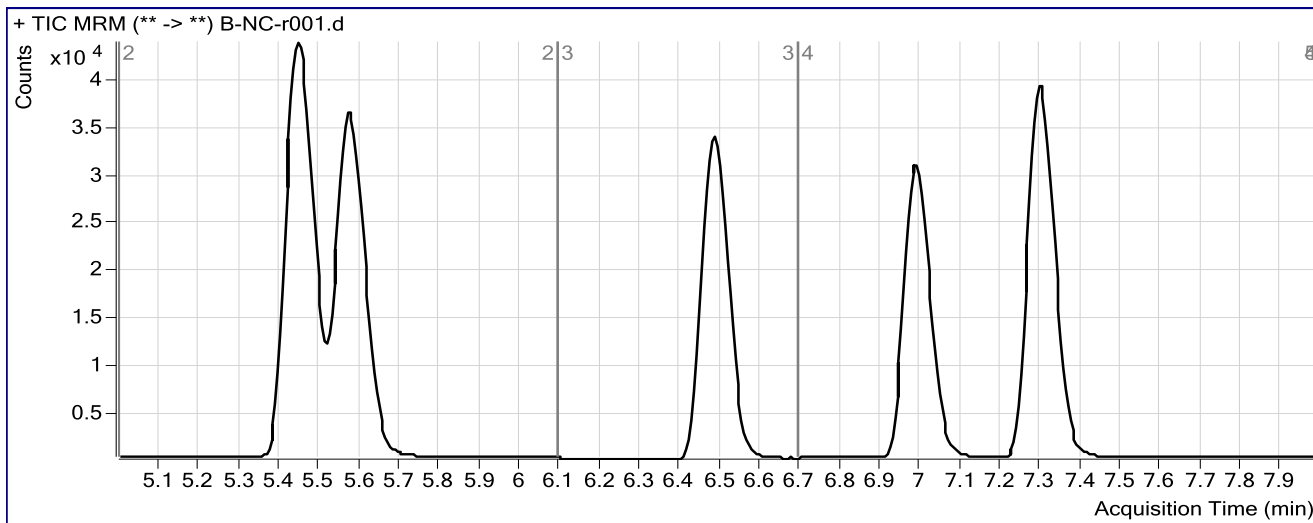
ISP FORENSICS Pocatello Cannabinoid Analysis Report

Batch Data Path C:\MassHunter\Data\020316 cannabinoid\QuantResults\020516 CANN.batch.bin
Analysis Time 2/5/2016 12:28 PM **Analyst Name** ISPUser
Report Time 2/5/2016 12:39 PM **Reporter Name** ISPUser
Last Calib Update 2/5/2016 12:28 PM **Batch State** Processed

Analysis Info

Acq Time 2016-02-04 13:30 **Data File** B-NC-r001.d
Sample Type Sample **Sample Name** Blood Negative Control
Dilution 1 **Acq Method** isp blood cannabinoids Poky 2016.m
Position P2-A9 **Sample Info** Negative Blood UTAK Lot B0689
Inj Vol -1 **Comment** AM 6.1.2 Cannabinoids by LCQQQ

Sample Chromatogram



Results

Compound	ISTD Compound	RT	Response	ISTD Resp	Resp Ratio	Final Conc
Cannabidiol	Cannabidiol-d3	6.603	0	65829	0.0000	0.0000

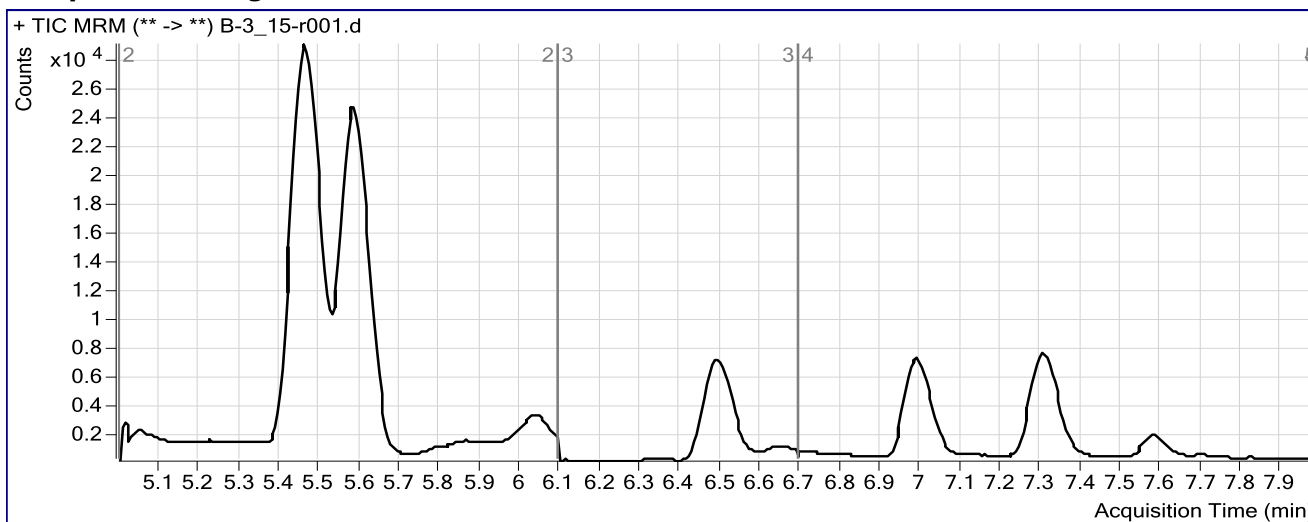
ISP FORENSICS Pocatello Cannabinoid Analysis Report

Batch Data Path	C:\MassHunter\Data\020316 cannabinoid\QuantResults\020516 CANN.batch.bin		
Analysis Time	2/5/2016 12:28 PM	Analyst Name	ISPUser
Report Time	2/5/2016 12:39 PM	Reporter Name	ISPUser
Last Calib Update	2/5/2016 12:28 PM	Batch State	Processed

Analysis Info

Acq Time	2016-02-04 13:43	Data File	B-3_15-r001.d
Sample Type	Sample	Sample Name	Blood 3_15ng/mL
Dilution	1	Acq Method	isp blood cannabinoids Poky 2016.m
Position	P2-B1	Sample Info	c-THC @15ng/mL, all others @3 ng/mL
Inj Vol	-1	Comment	AM 6.1.2 Cannabinoids by LCQQQ

Sample Chromatogram



Results

Compound	ISTD Compound	RT	Response	ISTD Resp	Resp Ratio	Final Conc
OH-THC	OH-THC-d3	5.471	36192	77963	0.4642	4.6593
THC-COOH	THC-COOH-d3	5.586	25411	16742	1.5178	12.0905
Cannabidiol	Cannabidiol-d3	6.497	3240	10951	0.2959	3.5204
Cannabinol	Cannabinol-d3	6.996	6439	18836	0.3419	4.0602
THC	THC-d3	7.307	3776	12335	0.3061	4.5696

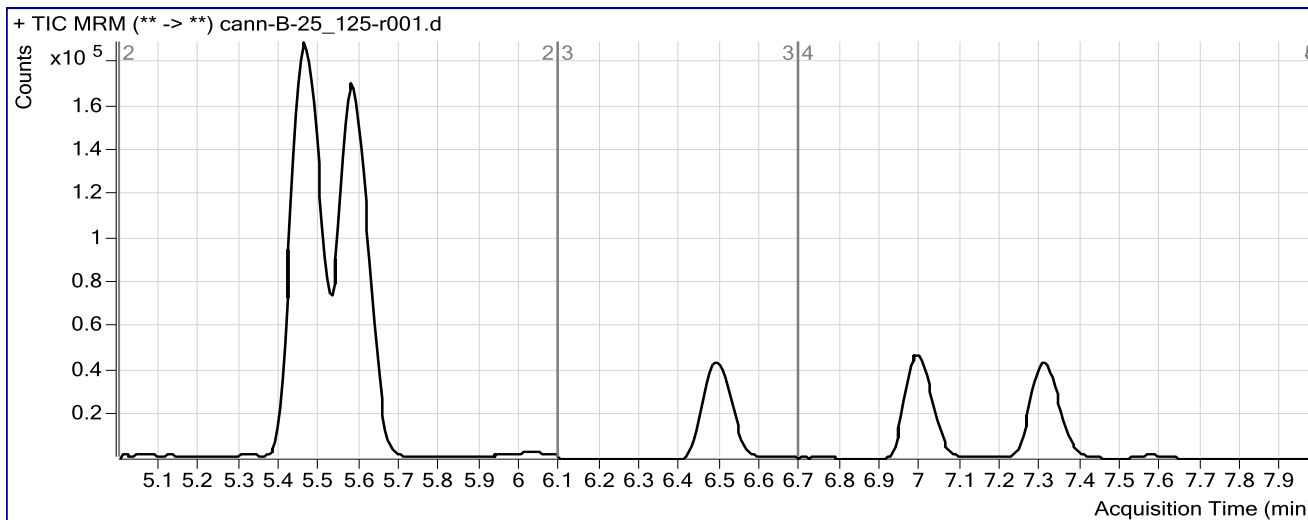
ISP FORENSICS Pocatello Cannabinoid Analysis Report

Batch Data Path C:\MassHunter\Data\020316 cannabinoid\QuantResults\020516 CANN.batch.bin
Analysis Time 2/5/2016 12:28 PM **Analyst Name** ISPUser
Report Time 2/5/2016 12:41 PM **Reporter Name** ISPUser
Last Calib Update 2/5/2016 12:28 PM **Batch State** Processed

Analysis Info

Acq Time 2016-02-04 18:35 **Data File** cann-B-25_125-r001.d
Sample Type Sample **Sample Name** Blood 25_125ng/mL
Dilution 1 **Acq Method** isp blood cannabinoids Poky 2016.m
Position P2-C3 **Sample Info** c-THC @125ng/mL, all others @25 ng/mL
Inj Vol -1 **Comment** AM 6.1.2 Cannabinoids by LCQQQ

Sample Chromatogram



Results

Compound	ISTD Compound	RT	Response	ISTD Resp	Resp Ratio	Final Conc
OH-THC	OH-THC-d3	5.466	691688	74286	9.3111	84.5350
THC-COOH	THC-COOH-d3	5.580	307546	15945	19.2879	151.8288
Cannabidiol	Cannabidiol-d3	6.491	73238	11864	6.1729	70.5681
Cannabinol	Cannabinol-d3	6.990	144061	19858	7.2547	83.0435
THC	THC-d3	7.301	72183	12060	5.9854	72.9074

ISP Forensics Calibration Curve Report

Batch Data Path C:\MassHunter\Data\020316 cannabinoid\QuantResults\020516 CANN.batch.bin

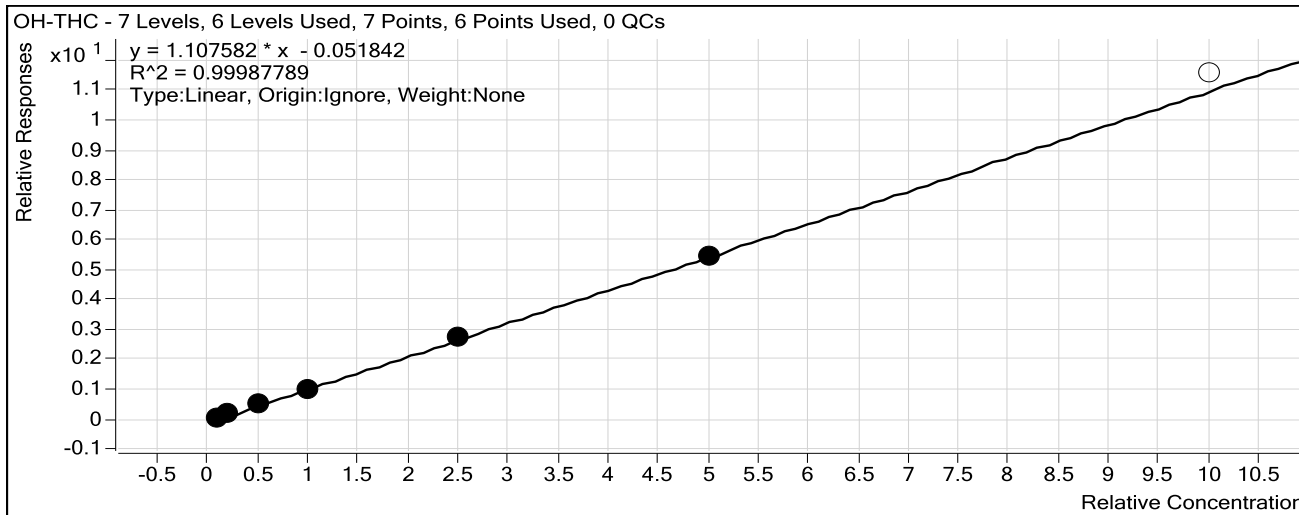
Last Calib Update 2/5/2016 12:28 PM

Analyst Name

ISP TOX

Target Compound OH-THC

Internal Standard OH-THC-d3



Sample	Level	Enabled	Exp Conc	Final Conc	Accuracy
Blood: 1_5 ng/mL	1	<input checked="" type="checkbox"/>	1	1.2	116.6
Blood: 2_10 ng/mL	2	<input checked="" type="checkbox"/>	2	2.2	111.2
Blood: 5_25 ng/mL	3	<input checked="" type="checkbox"/>	5	4.8	96.6
Blood: 10_50 ng/mL	4	<input checked="" type="checkbox"/>	10	9.7	96.7
Blood: 25_125 ng/mL	5	<input checked="" type="checkbox"/>	25	25.1	100.3
Blood: 50_250 ng/mL	6	<input checked="" type="checkbox"/>	50	50.0	100.1
Blood: 100_500 ng/mL	7	<input type="checkbox"/>	100	104.8	104.8

ISP Forensics Calibration Curve Report

CS

Batch Data Path C:\MassHunter\Data\020316 cannabinoid\QuantResults\020516 CANN.batch.bin

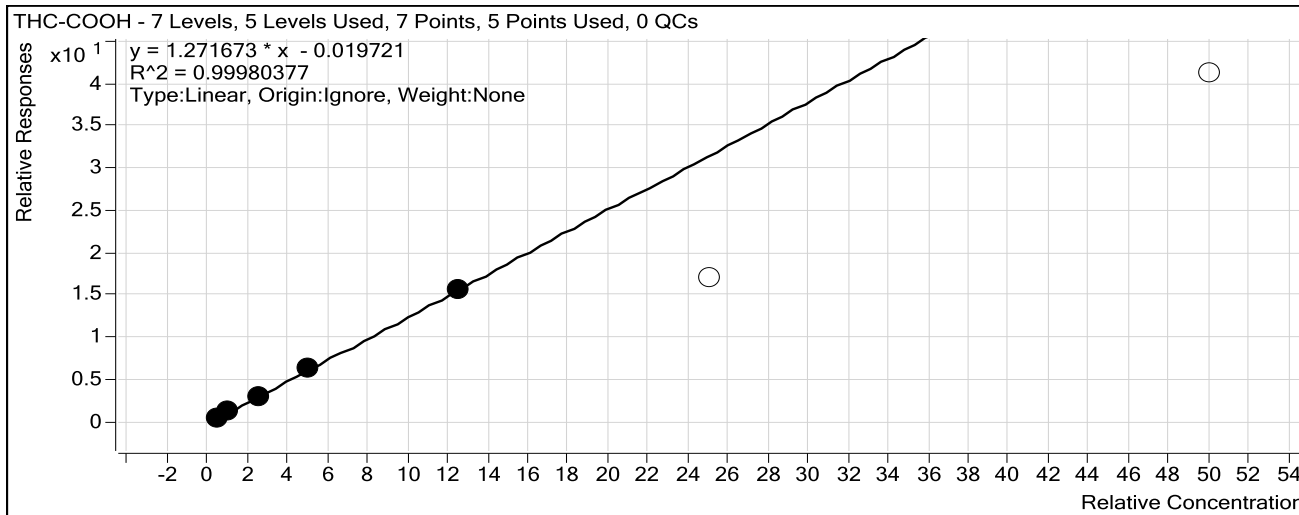
Last Calib Update 2/5/2016 12:28 PM

Analyst Name

ISP TOX

Target Compound *THC-COOH*

Internal Standard *THC-COOH-d3*



Sample	Level	Enabled	Exp Conc	Final Conc	Accuracy
Blood: 1_5 ng/mL	1	<input checked="" type="checkbox"/>	5	5.0	100.2
Blood: 2_10 ng/mL	2	<input checked="" type="checkbox"/>	10	9.9	99.0
Blood: 5_25 ng/mL	3	<input checked="" type="checkbox"/>	25	24.3	97.0
Blood: 10_50 ng/mL	4	<input checked="" type="checkbox"/>	50	51.1	102.2
Blood: 25_125 ng/mL	5	<input checked="" type="checkbox"/>	125	124.7	99.8
Blood: 50_250 ng/mL	6	<input type="checkbox"/>	250	134.4	53.8
Blood: 100_500 ng/mL	7	<input type="checkbox"/>	500	324.1	64.8

ISP Forensics Calibration Curve Report

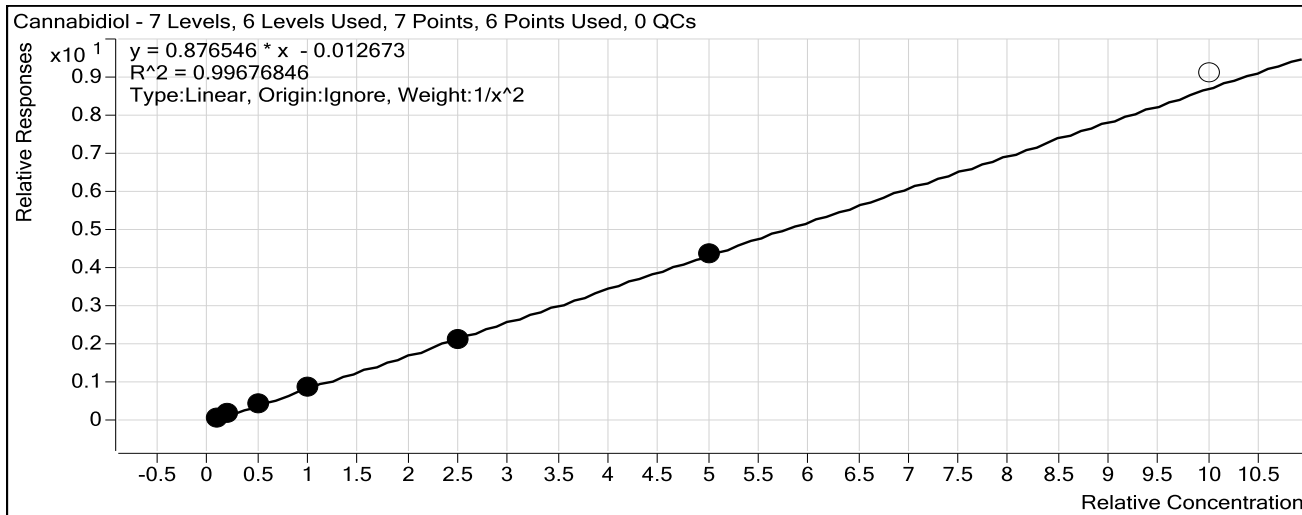
Batch Data Path C:\MassHunter\Data\020316 cannabinoid\QuantResults\020516 CANN.batch.bin

Last Calib Update 2/5/2016 12:28 PM

Analyst Name ISP TOX

Target Compound *Cannabidiol*

Internal Standard *Cannabidiol-d3*



Sample	Level	Enabled	Exp Conc	Final Conc	Accuracy
Blood: 1_5 ng/mL	1	<input checked="" type="checkbox"/>	1	1.0	96.7
Blood: 2_10 ng/mL	2	<input checked="" type="checkbox"/>	2	2.2	108.2
Blood: 5_25 ng/mL	3	<input checked="" type="checkbox"/>	5	4.8	95.4
Blood: 10_50 ng/mL	4	<input checked="" type="checkbox"/>	10	10.2	102.1
Blood: 25_125 ng/mL	5	<input checked="" type="checkbox"/>	25	24.4	97.7
Blood: 50_250 ng/mL	6	<input checked="" type="checkbox"/>	50	50.0	99.9
Blood: 100_500 ng/mL	7	<input type="checkbox"/>	100	104.0	104.0

ISP Forensics Calibration Curve Report

CS

Batch Data Path C:\MassHunter\Data\020316 cannabinoid\QuantResults\020516 CANN.batch.bin

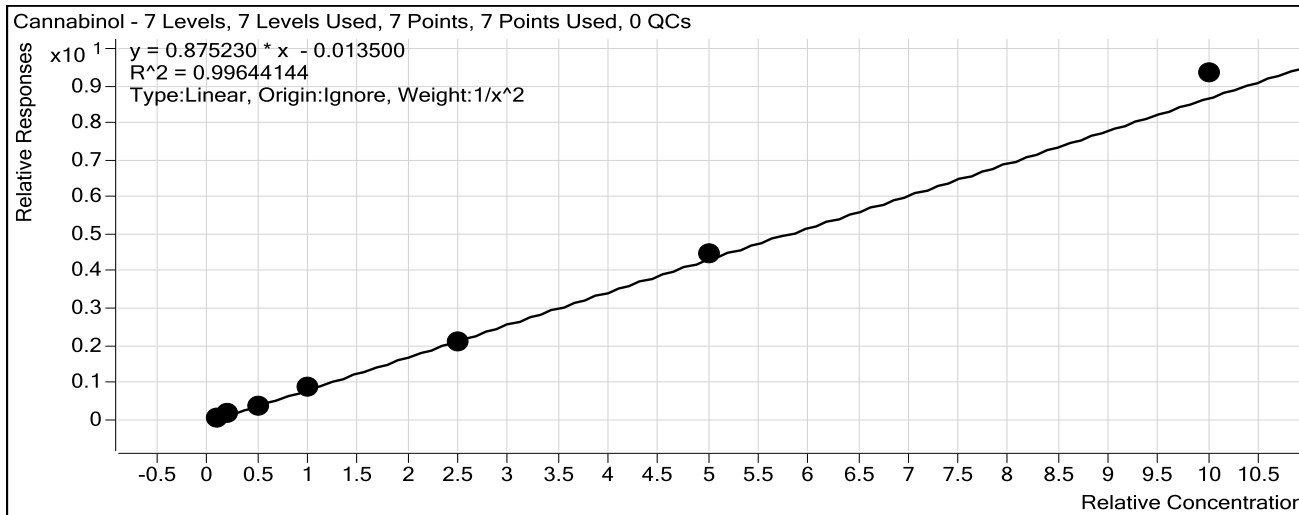
Last Calib Update 2/5/2016 12:28 PM

Analyst Name

ISP TOX

Target Compound *Cannabinol*

Internal Standard *Cannabinol-d3*



Sample	Level	Enabled	Exp Conc	Final Conc	Accuracy
Blood: 1_5 ng/mL	1	<input checked="" type="checkbox"/>	1	1.0	102.6
Blood: 2_10 ng/mL	2	<input checked="" type="checkbox"/>	2	2.0	97.9
Blood: 5_25 ng/mL	3	<input checked="" type="checkbox"/>	5	4.6	91.2
Blood: 10_50 ng/mL	4	<input checked="" type="checkbox"/>	10	10.2	101.7
Blood: 25_125 ng/mL	5	<input checked="" type="checkbox"/>	25	24.3	97.1
Blood: 50_250 ng/mL	6	<input checked="" type="checkbox"/>	50	51.3	102.7
Blood: 100_500 ng/mL	7	<input checked="" type="checkbox"/>	100	106.8	106.8

ISP Forensics Calibration Curve Report

CS

Batch Data Path C:\MassHunter\Data\020316 cannabinoid\QuantResults\020516 CANN.batch.bin

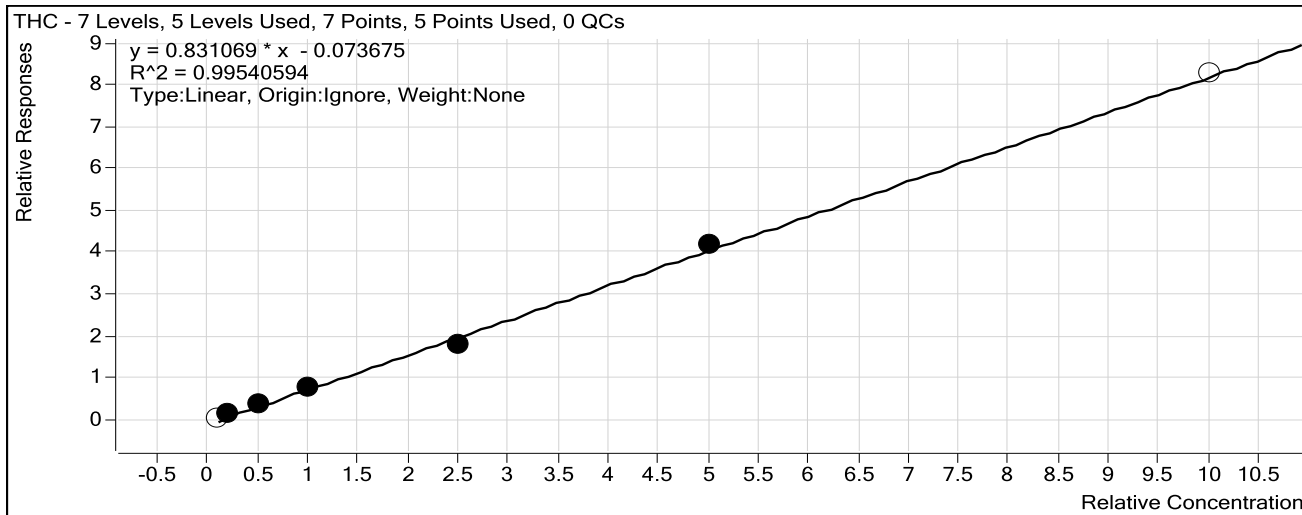
Last Calib Update 2/5/2016 12:28 PM

Analyst Name

ISP TOX

Target Compound *THC*

Internal Standard *THC-d3*



Sample	Level	Enabled	Exp Conc	Final Conc	Accuracy
Blood: 1_5 ng/mL	1	<input type="checkbox"/>	1	1.6	158.5
Blood: 2_10 ng/mL	2	<input checked="" type="checkbox"/>	2	2.4	119.1
Blood: 5_25 ng/mL	3	<input checked="" type="checkbox"/>	5	5.4	108.3
Blood: 10_50 ng/mL	4	<input checked="" type="checkbox"/>	10	10.5	105.5
Blood: 25_125 ng/mL	5	<input checked="" type="checkbox"/>	25	22.6	90.6
Blood: 50_250 ng/mL	6	<input checked="" type="checkbox"/>	50	51.0	102.0
Blood: 100_500 ng/mL	7	<input type="checkbox"/>	100	100.4	100.4

ISP FORENSICS

Pocatello

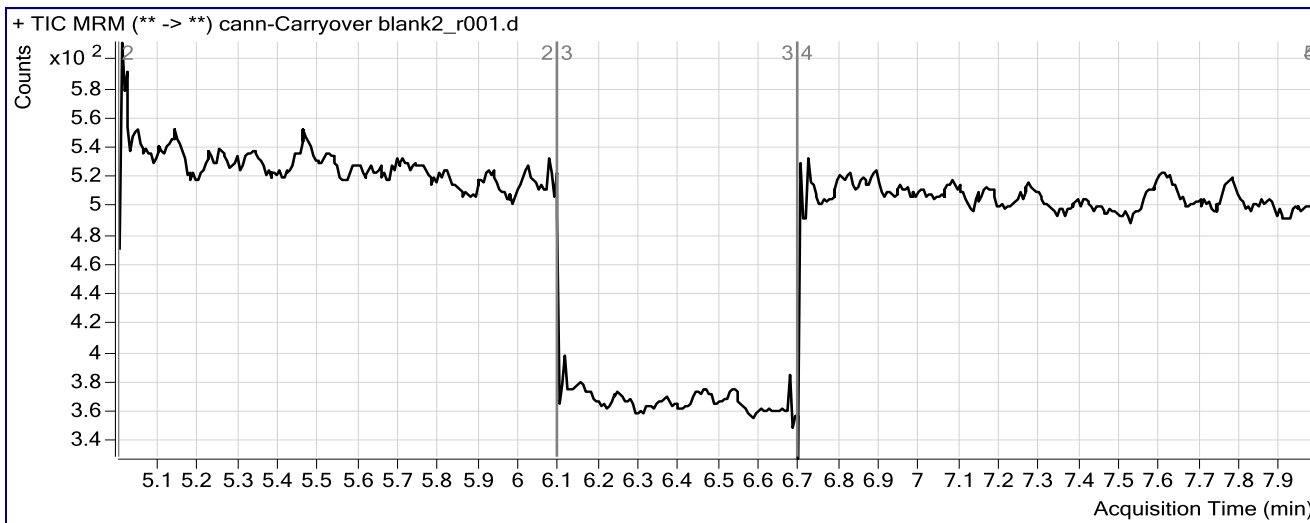
Cannabinoid Analysis Report

Batch Data Path C:\MassHunter\Data\020316 cannabinoid\QuantResults\020516 CANN.batch.bin
Analysis Time 2/5/2016 12:28 PM **Analyst Name** ISPUser
Report Time 2/5/2016 12:41 PM **Reporter Name** ISPUser
Last Calib Update 2/5/2016 12:28 PM **Batch State** Processed

Analysis Info

Acq Time 2016-02-04 18:22 **Data File** cann-Carryover blank2_r001.d
Sample Type Blank **Sample Name** Blank
Dilution 1 **Acq Method** isp blood cannabinoids Poky 2016.m
Position P2-A1 **Sample Info**
Inj Vol -1 **Comment** AM 6.1.2 Cannabinoids by LCQQQ

Sample Chromatogram



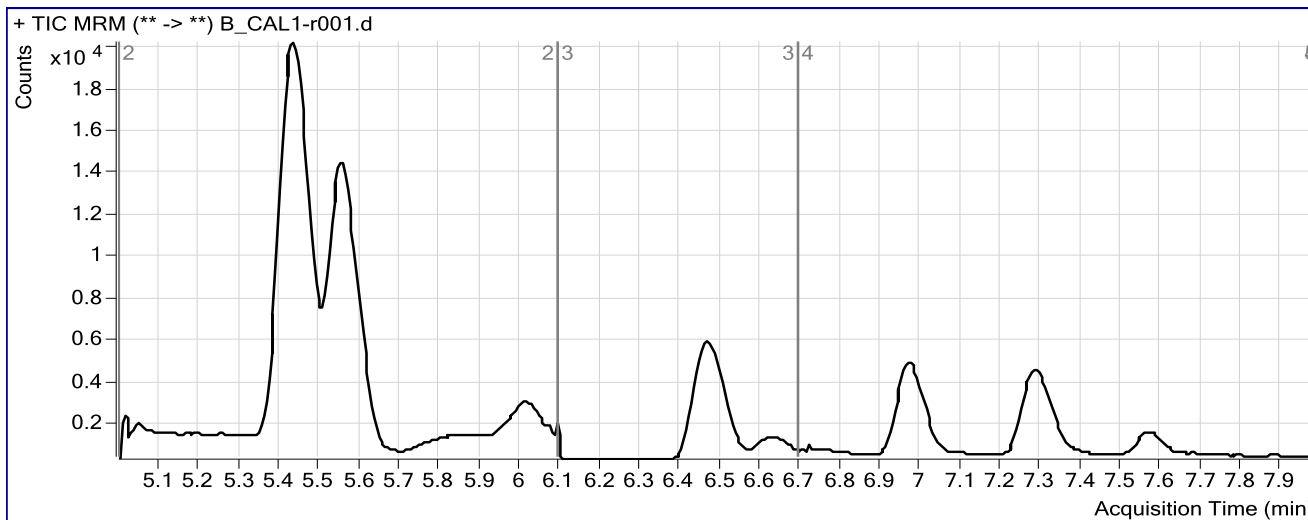
ISP FORENSICS Pocatello Cannabinoid Analysis Report

Batch Data Path C:\MassHunter\Data\020316 cannabinoid\QuantResults\020516 CANN.batch.bin
Analysis Time 2/5/2016 12:28 PM **Analyst Name** ISPUser
Report Time 2/5/2016 12:38 PM **Reporter Name** ISPUser
Last Calib Update 2/5/2016 12:28 PM **Batch State** Processed

Analysis Info

Acq Time 2016-02-04 11:44 **Data File** B_CAL1-r001.d
Sample Type Calibration **Sample Name** Blood: 1_5 ng/mL
Dilution 1 **Acq Method** isp blood cannabinoids Poky 2016.m
Position P2-A2 **Sample Info** c-THC @5ng/mL, all others @1 ng/mL
Inj Vol -1 **Comment** AM 6.1.2 Cannabinoids by LCQQQ

Sample Chromatogram



Results

Compound	ISTD Compound	RT	Response	ISTD Resp	Resp Ratio	Final Conc
OH-THC	OH-THC-d3	5.449	5672	73340	0.0773	1.1663
THC-COOH	THC-COOH-d3	5.564	9216	14934	0.6171	5.0079
Cannabidiol	Cannabidiol-d3	6.472	785	10881	0.0721	0.9672
Cannabinol	Cannabinol-d3	6.979	1195	15664	0.0763	1.0262
THC	THC-d3	7.290	525	9032	0.0581	1.5854

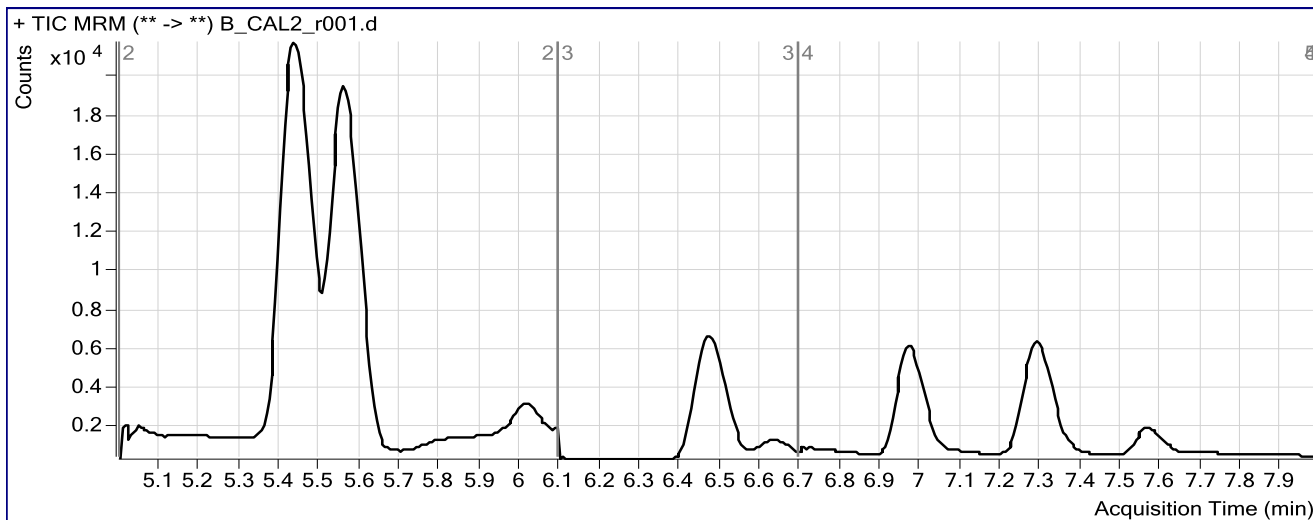
ISP FORENSICS Pocatello Cannabinoid Analysis Report

Batch Data Path C:\MassHunter\Data\020316 cannabinoid\QuantResults\020516 CANN.batch.bin
Analysis Time 2/5/2016 12:28 PM **Analyst Name** ISPUser
Report Time 2/5/2016 12:38 PM **Reporter Name** ISPUser
Last Calib Update 2/5/2016 12:28 PM **Batch State** Processed

Analysis Info

Acq Time 2016-02-04 11:57 **Data File** B_CAL2_r001.d
Sample Type Calibration **Sample Name** Blood: 2_10 ng/mL
Dilution 1 **Acq Method** isp blood cannabinoids Poky 2016.m
Position P2-A3 **Sample Info** c-THC @10ng/mL, all others @2 ng/mL
Inj Vol -1 **Comment** AM 6.1.2 Cannabinoids by LCQQQ

Sample Chromatogram



Results

Compound	ISTD Compound	RT	Response	ISTD Resp	Resp Ratio	Final Conc
OH-THC	OH-THC-d3	5.449	14434	74229	0.1945	2.2237
THC-COOH	THC-COOH-d3	5.564	19039	15356	1.2398	9.9048
Cannabidiol	Cannabidiol-d3	6.478	2036	11505	0.1770	2.1634
Cannabinol	Cannabinol-d3	6.979	2864	18133	0.1580	1.9590
THC	THC-d3	7.290	1451	11670	0.1243	2.3822

ISP FORENSICS

Pocatello

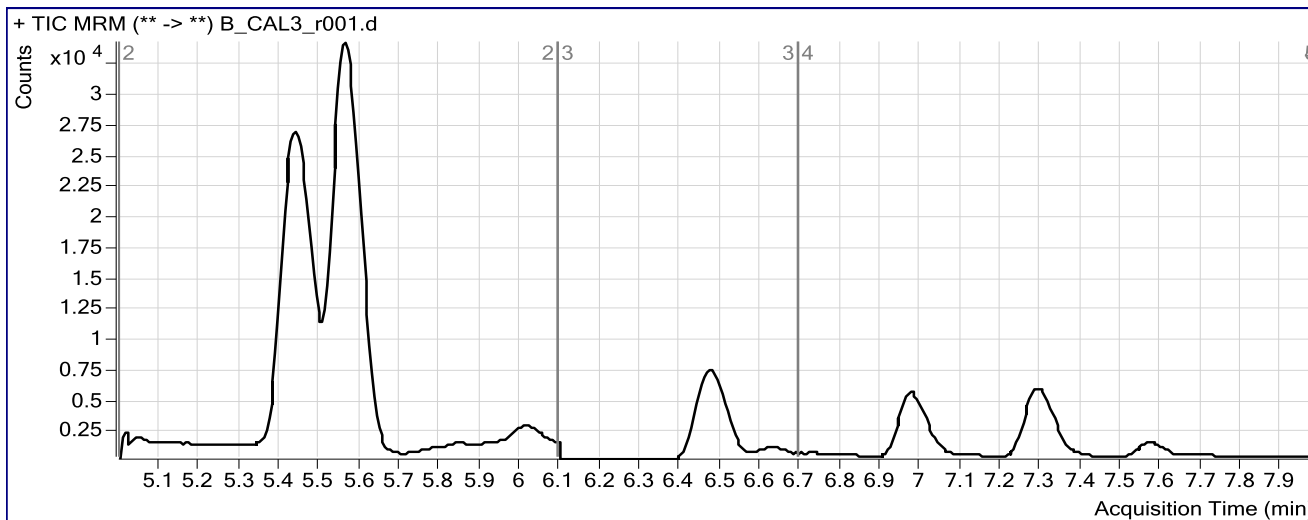
Cannabinoid Analysis Report

Batch Data Path	C:\MassHunter\Data\020316 cannabinoid\QuantResults\020516 CANN.batch.bin		
Analysis Time	2/5/2016 12:28 PM	Analyst Name	ISPUser
Report Time	2/5/2016 12:38 PM	Reporter Name	ISPUser
Last Calib Update	2/5/2016 12:28 PM	Batch State	Processed

Analysis Info

Acq Time	2016-02-04 12:11	Data File	B_CAL3_r001.d
Sample Type	Calibration	Sample Name	Blood: 5_25 ng/mL
Dilution	1	Acq Method	isp blood cannabinoids Poky 2016.m
Position	P2-A4	Sample Info	c-THC @25ng/mL, all others @5 ng/mL
Inj Vol	-1	Comment	AM 6.1.2 Cannabinoids by LCQQQ

Sample Chromatogram



Results

Compound	ISTD Compound	RT	Response	ISTD Resp	Resp Ratio	Final Conc
OH-THC	OH-THC-d3	5.449	35577	73613	0.4833	4.8316
THC-COOH	THC-COOH-d3	5.569	45772	14931	3.0655	24.2614
Cannabidiol	Cannabidiol-d3	6.478	4263	10512	0.4055	4.7705
Cannabinol	Cannabinol-d3	6.985	5491	14244	0.3855	4.5589
THC	THC-d3	7.296	3406	9053	0.3762	5.4137

6

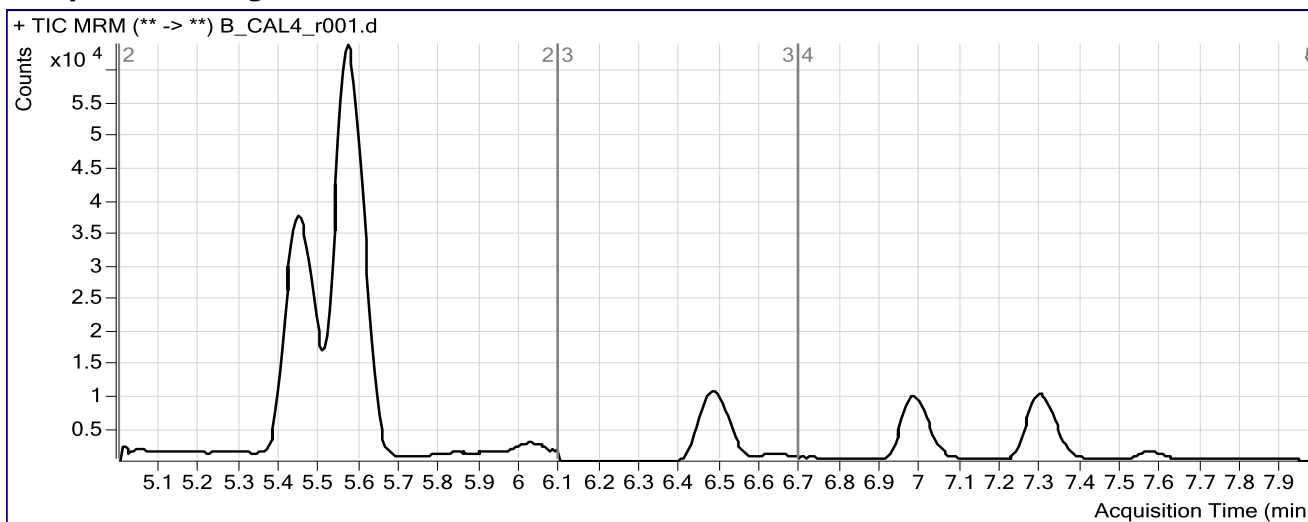
ISP FORENSICS Pocatello Cannabinoid Analysis Report

Batch Data Path C:\MassHunter\Data\020316 cannabinoid\QuantResults\020516 CANN.batch.bin
Analysis Time 2/5/2016 12:28 PM **Analyst Name** ISPUser
Report Time 2/5/2016 12:38 PM **Reporter Name** ISPUser
Last Calib Update 2/5/2016 12:28 PM **Batch State** Processed

Analysis Info

Acq Time 2016-02-04 12:24 **Data File** B_CAL4_r001.d
Sample Type Calibration **Sample Name** Blood: 10_50 ng/mL
Dilution 1 **Acq Method** isp blood cannabinoids Poky 2016.m
Position P2-A5 **Sample Info** c-THC @50ng/mL, all others @10 ng/mL
Inj Vol -1 **Comment** AM 6.1.2 Cannabinoids by LCQQQ

Sample Chromatogram



Results

Compound	ISTD Compound	RT	Response	ISTD Resp	Resp Ratio	Final Conc
OH-THC	OH-THC-d3	5.454	76541	75097	1.0192	9.6703
THC-COOH	THC-COOH-d3	5.575	99731	15389	6.4808	51.1181
Cannabidiol	Cannabidiol-d3	6.484	10387	11774	0.8822	10.2095
Cannabinol	Cannabinol-d3	6.985	16550	18880	0.8766	10.1698
THC	THC-d3	7.296	9807	12212	0.8031	10.5499

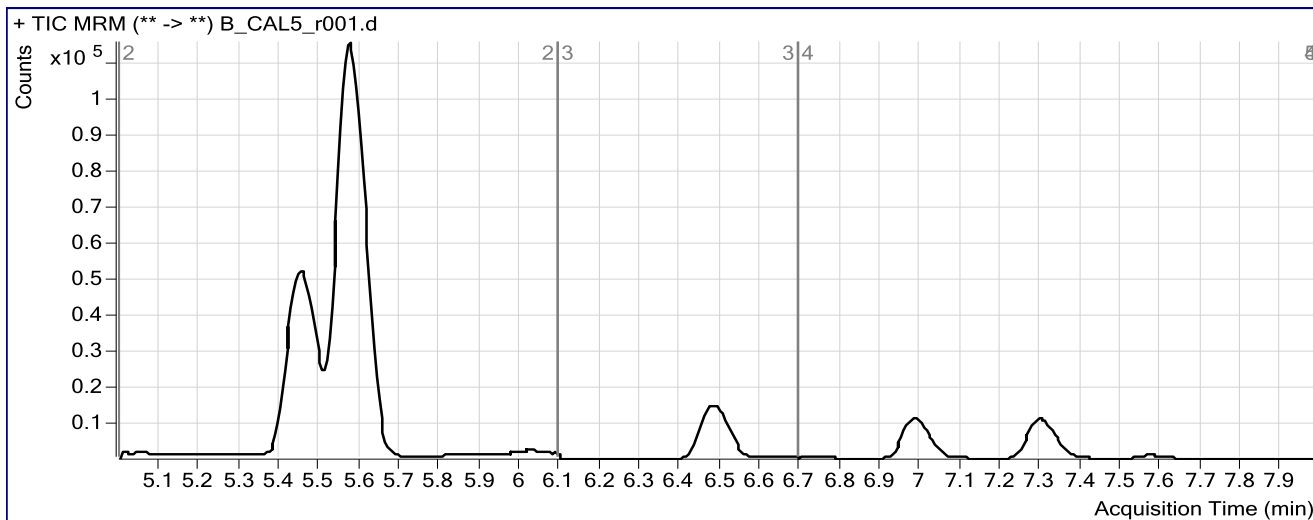
ISP FORENSICS Pocatello Cannabinoid Analysis Report

Batch Data Path C:\MassHunter\Data\020316 cannabinoid\QuantResults\020516 CANN.batch.bin
Analysis Time 2/5/2016 12:28 PM **Analyst Name** ISPUser
Report Time 2/5/2016 12:38 PM **Reporter Name** ISPUser
Last Calib Update 2/5/2016 12:28 PM **Batch State** Processed

Analysis Info

Acq Time 2016-02-04 12:37 **Data File** B_CAL5_r001.d
Sample Type Calibration **Sample Name** Blood: 25_125 ng/mL
Dilution 1 **Acq Method** isp blood cannabinoids Poky 2016.m
Position P2-A6 **Sample Info** c-THC @125ng/mL, all others @25 ng/mL
Inj Vol -1 **Comment** AM 6.1.2 Cannabinoids by LCQQQ

Sample Chromatogram



Results

Compound	ISTD Compound	RT	Response	ISTD Resp	Resp Ratio	Final Conc
OH-THC	OH-THC-d3	5.460	155183	56939	2.7254	25.0751
THC-COOH	THC-COOH-d3	5.575	199666	12606	15.8390	124.7078
Cannabidiol	Cannabidiol-d3	6.484	19608	9216	2.1276	24.4173
Cannabinol	Cannabinol-d3	6.985	26952	12773	2.1101	24.2636
THC	THC-d3	7.296	14444	7989	1.8080	22.6419

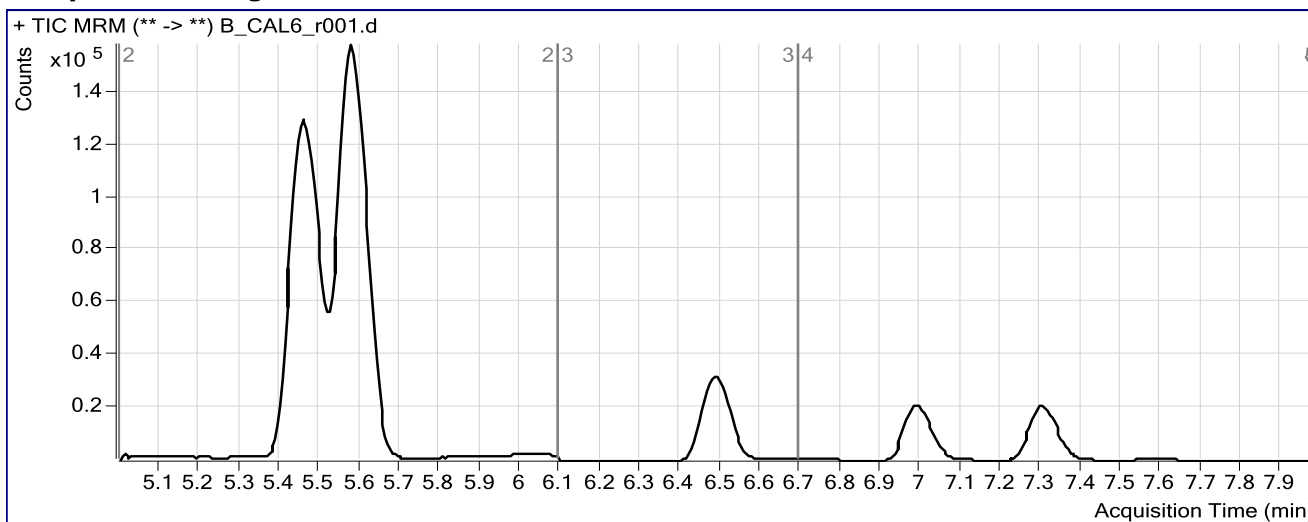
ISP FORENSICS Pocatello Cannabinoid Analysis Report

Batch Data Path	C:\MassHunter\Data\020316 cannabinoid\QuantResults\020516 CANN.batch.bin		
Analysis Time	2/5/2016 12:28 PM	Analyst Name	ISPUser
Report Time	2/5/2016 12:38 PM	Reporter Name	ISPUser
Last Calib Update	2/5/2016 12:28 PM	Batch State	Processed

Analysis Info

Acq Time	2016-02-04 12:50	Data File	B_CAL6_r001.d
Sample Type	Calibration	Sample Name	Blood: 50_250 ng/mL
Dilution	1	Acq Method	isp blood cannabinoids Poky 2016.m
Position	P2-A7	Sample Info	c-THC @250ng/mL, all others @50 ng/mL
Inj Vol	-1	Comment	AM 6.1.2 Cannabinoids by LCQQQ

Sample Chromatogram



Results

Compound	ISTD Compound	RT	Response	ISTD Resp	Resp Ratio	Final Conc
OH-THC	OH-THC-d3	5.466	438509	79878	5.4897	50.0329
THC-COOH	THC-COOH-d3	5.580	271506	15900	17.0763	134.4369
Cannabidiol	Cannabidiol-d3	6.491	49819	11407	4.3674	49.9694
Cannabinol	Cannabinol-d3	6.990	59381	13253	4.4805	51.3465
THC	THC-d3	7.301	33714	8093	4.1658	51.0124

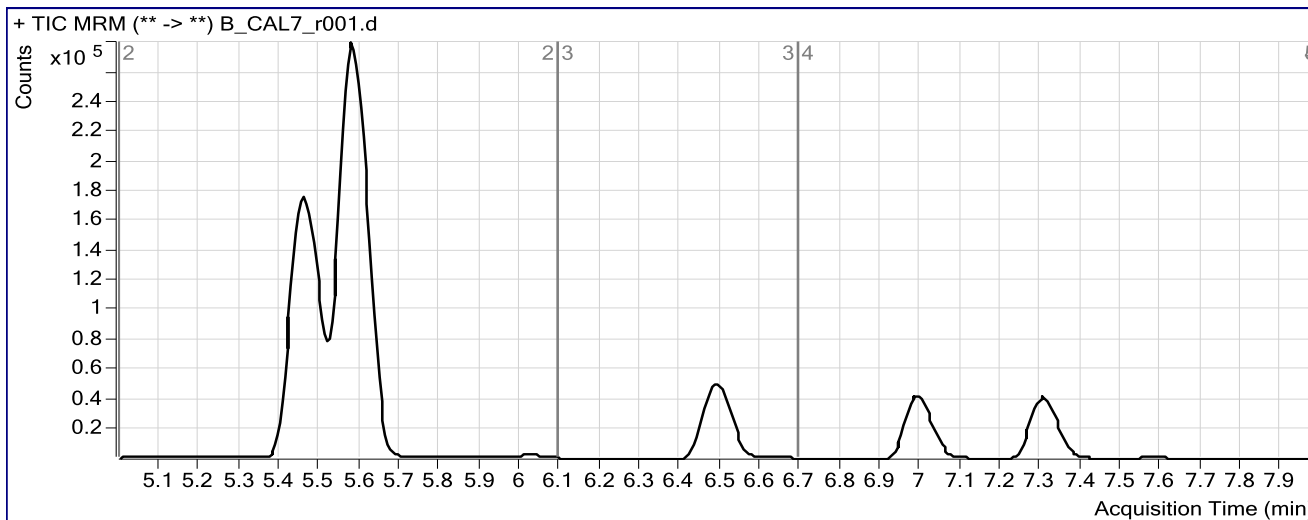
ISP FORENSICS Pocatello Cannabinoid Analysis Report

Batch Data Path C:\MassHunter\Data\020316 cannabinoid\QuantResults\020516 CANN.batch.bin
Analysis Time 2/5/2016 12:28 PM **Analyst Name** ISPUser
Report Time 2/5/2016 12:38 PM **Reporter Name** ISPUser
Last Calib Update 2/5/2016 12:28 PM **Batch State** Processed

Analysis Info

Acq Time 2016-02-04 13:04 **Data File** B_CAL7_r001.d
Sample Type Calibration **Sample Name** Blood: 100_500 ng/mL
Dilution 1 **Acq Method** isp blood cannabinoids Poky 2016.m
Position P2-A8 **Sample Info** c-THC @500ng/mL, all others @100 ng/mL
Inj Vol -1 **Comment** AM 6.1.2 Cannabinoids by LCQQQ

Sample Chromatogram



Results

Compound	ISTD Compound	RT	Response	ISTD Resp	Resp Ratio	Final Conc
OH-THC	OH-THC-d3	5.466	651327	56365	11.5554	104.7985
THC-COOH	THC-COOH-d3	5.580	503396	12218	41.1999	324.1373
Cannabidiol	Cannabidiol-d3	6.491	86074	9457	9.1014	103.9769
Cannabinol	Cannabinol-d3	6.990	129237	13844	9.3350	106.8115
THC	THC-d3	7.301	71843	8684	8.2733	100.4361

ISP FORENSICS

Pocatello

Cannabinoid Analysis Report

Batch Data Path	C:\MassHunter\Data\020316 cannabinoid\QuantResults\020516 CANN.batch.bin		
Analysis Time	2/5/2016 12:28 PM	Analyst Name	ISPUser
Report Time	2/5/2016 12:36 PM	Reporter Name	ISPUser
Last Calib Update	2/5/2016 12:28 PM	Batch State	Processed

Analysis Info

Acq Time	2016-02-04 19:42	Data File	Blank3-r001.d
Sample Type	Blank	Sample Name	Blank
Dilution	1	Acq Method	isp blood cannabinoids Poky 2016.m
Position	P2-A1	Sample Info	
Inj Vol	-1	Comment	AM 6.1.2 Cannabinoids by LCQQQ

Sample Chromatogram

